



Model:  
WS SB FOR ATLONA AT-VTP-550 5.5"

Family: WALL-SMART  
DWG NO. 10-04-440-SPC



Model No.: 10-01-440

PRODUCT SPEC.

REVISION A  
DATE 10/NOV./2017

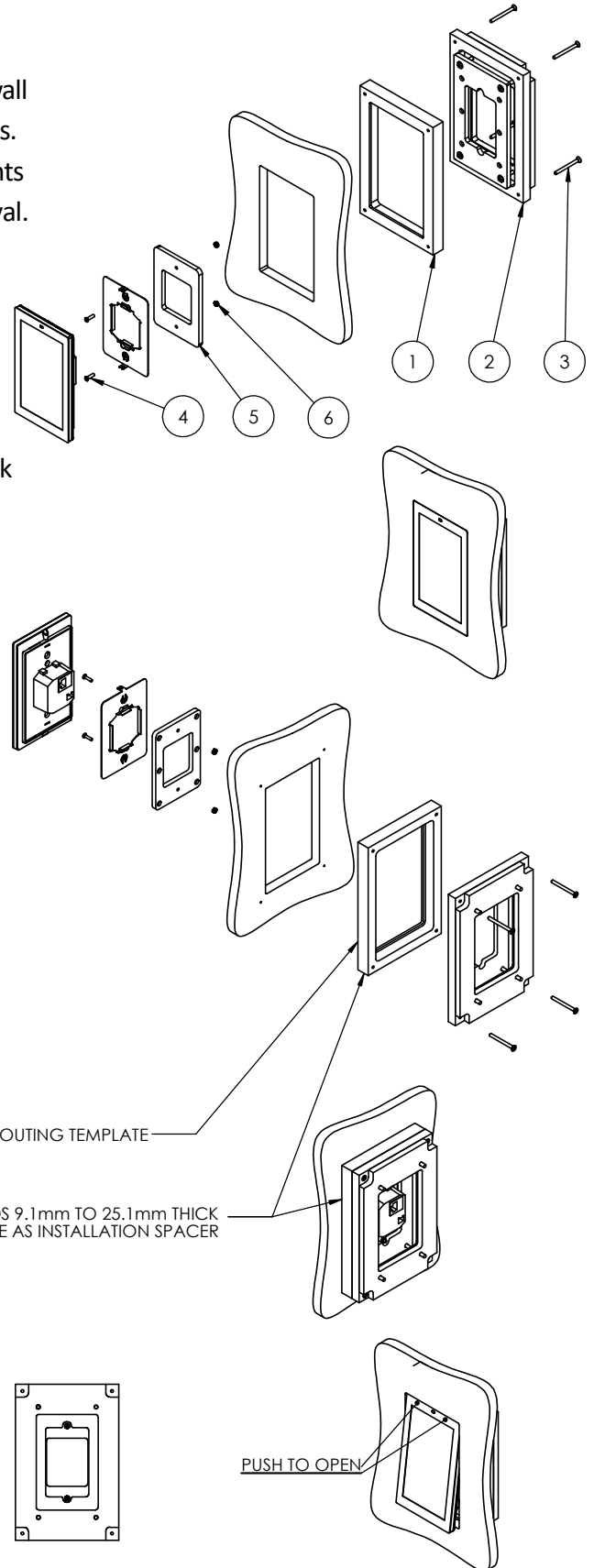
### Make Your Wall Smart

#### “WS SB FOR ATLONA AT-VTP-550 5.5” - Product description:

The “WS SB FOR ATLONA AT-VTP-550 5.5” is an adapter for in-wall flush installation of a AT-VTP-550 touchscreen in solid board walls. The “WS SB FOR ATLONA AT-VTP-550 5.5” SCREEN” firmly mounts the touch screen while allowing easy access, insertion and removal.

#### Key features and benefits:

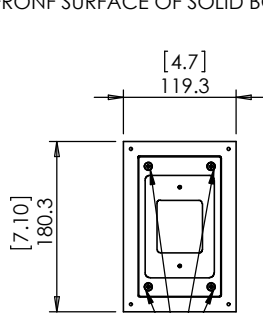
- Flush with the wall.
- Allows easy insertion and removal of the touch screen by manual push and magnet detachment.
- Designed to be installed in 3.1 ~ 38.1mm (0.122” ~ 1.5”) thick solid boards.
- Installation adapter contains depth adjustment mechanism.
- Installation kit contain:  
X1 routing template (item #1)  
X1 installation adapter (item #2)  
X4 ST3x40 screws (item #3)  
X2 M3x12 screws (item #4)  
X1 touch screen adapter (item #5)  
X2 M3 nuts (item #6)
- Designed for AT-VTP-550 touch screen (by Atlona) (Touch screen not included).



#### Key properties:

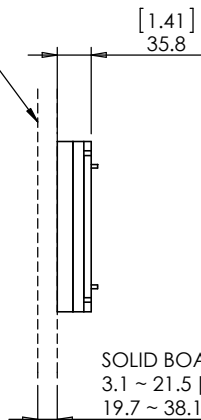
- Dimensions (W/H/D): 119.3mm (4.7")/ 180.3mm (7.1")/ 35.8mm (1.41")
- Power Supply: None (manual adapter).
- Weight: 0.42Kg, 0.924lbs.
- Material: Moisture resistant MDF

FRONT SURFACE OF SOLID BOARD



DEPTH ADJUSTMENT SCREWS

FOR INSTALLATION IN BOARDS 9.1mm TO 25.1mm THICK  
USE ROUTING TEMPLATE AS INSTALLATION SPACER



SOLID BOARD THICKNESS RANGE:  
3.1 ~ 21.5 [0.122"~0.846"] WITH SPACER  
19.7 ~ 38.1 [0.77"~1.5"] WITHOUT SPACER



Model:  
WS SB FOR ATLONA AT-VTP-550 5.5"

Family: WALL-SMART  
DWG NO. 10-04-440-SPC

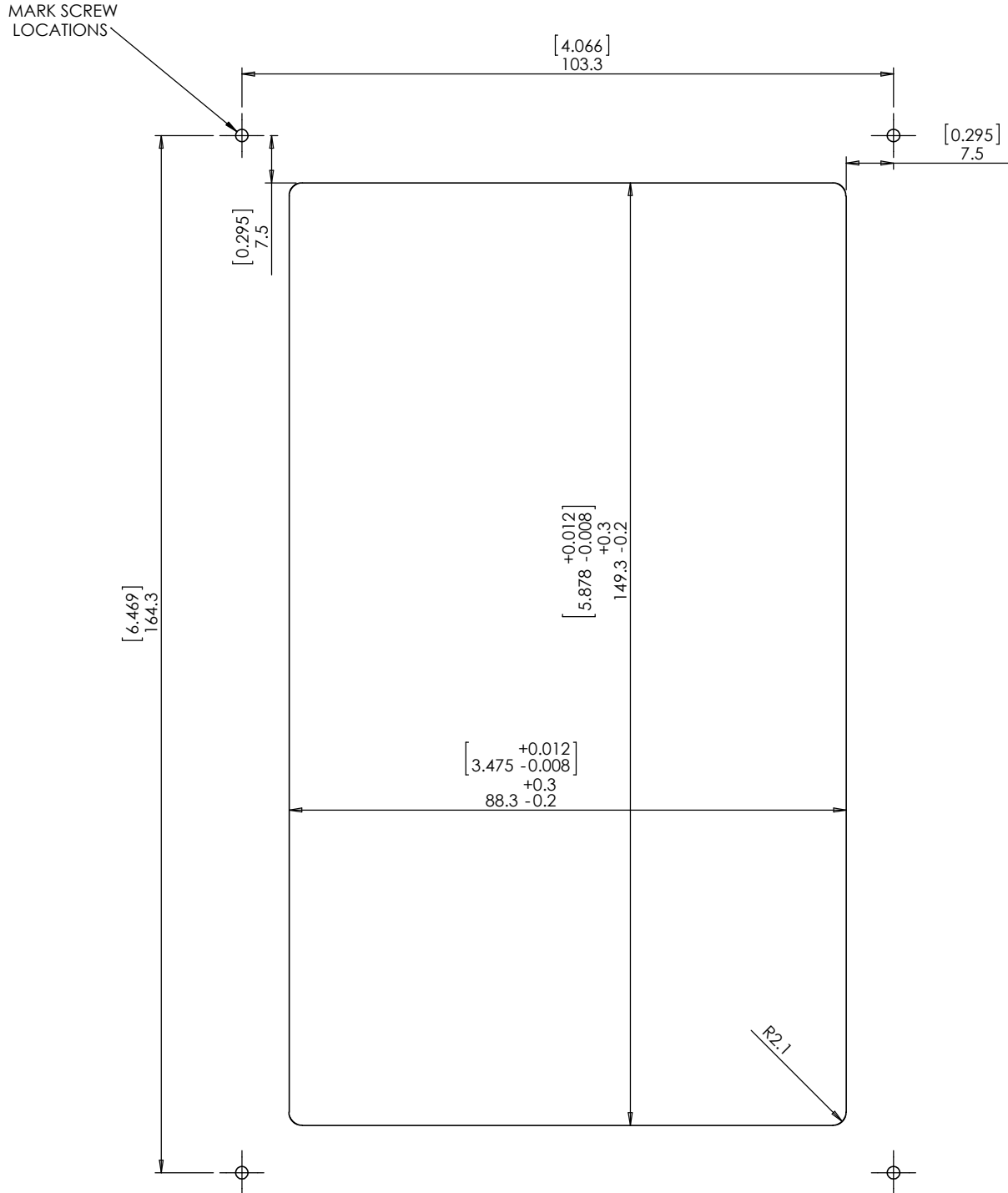


Model No.: 10-01-440

PRODUCT SPEC.

REVISION A  
DATE 10/NOV./2017

### ROUTING TEMPLATE



Download template DXF file:

<http://www.wall-smart.com/uploads/2/4/1/6/24165207/10-04-434-template.dxf>