



Model: WS US 1GANG WALL ADAPTOR BACK INST.

Family: WALL-SMART

DWG NO. 10-04-312-SPC



Model No.: 10-01-312

PRODUCT SPEC.

REVISION A

DATE 03/June/2015

Make Your Wall Smart

WS US 1GANG WALL ADAPTOR BACK INST. - Product description:

The "WS US 1GANG WALL ADAPTOR BACK INST." is an adapter for flush installation in solid boards of 1 gang Decora style keypads installed in a "WS FACEPLATE".

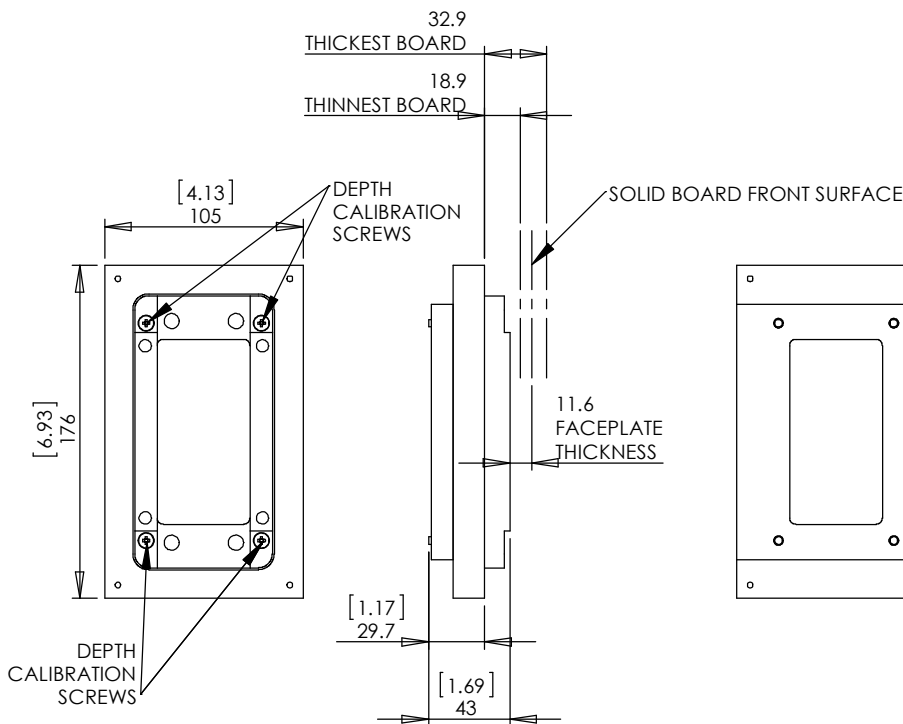
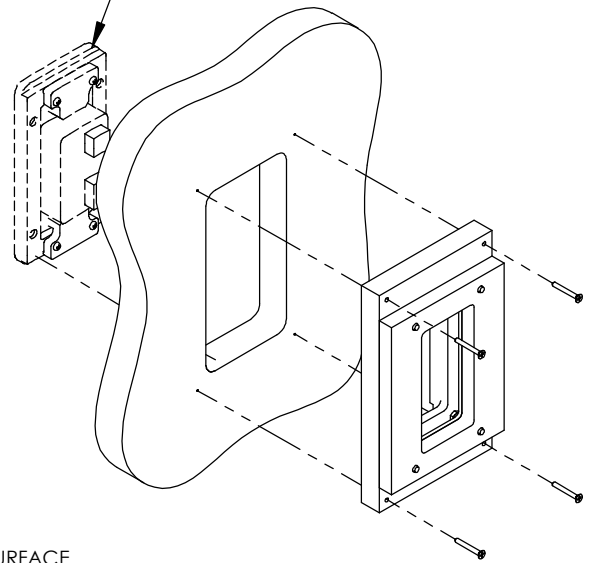
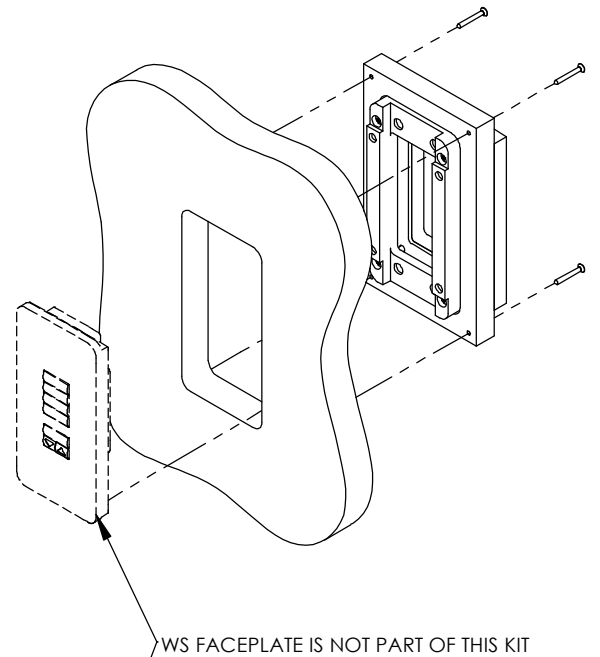
The "WS US 1GANG WALL ADAPTOR" securely mounts the "WS FACEPLATE" while allowing easy access, insertion and operation.

Key features and benefits:

- Adapter includes depth calibration mechanism allowing installation in solid boards ranging in thickness from 19mm to 33mm [0.75"-1.3"]
- Allows easy insertion and removal of the "WS FACEPLATE" by manual push and magnet detachment.
- The adapter is supplied unpainted.
- Designed for the use with "WS FACEPLATE" (by Wall-Smart Ltd.) (Faceplate and keypad not included).

Key properties:

- Dimensions (W/H/D): 105mm (4.13")/ 176mm (6.93")/ 43mm (1.69")
- Power Supply: None (manual adapter).
- Weight: 0.3Kg, 0.7lbs.
- Material: Moisture resistant MDF





Model: WS US 1GANG WALL ADAPTOR
BACK INST.

Family: WALL-SMART

DWG NO. 10-04-312-SPC

Model No.: 10-01-312

PRODUCT SPEC.

REVISION A

DATE 03/June/2015



OPENING TO BE ROUTED IN SOLID BOARD

R8.5 TYP

