



Model: WALL-SMART FOR SENTIDO  
by BASALTE ©

Family: WALL-SMART

DWG NO. 10-04-071-SPC



Model No.: 10-01-071

PRODUCT SPEC.

REVISION C

DATE 05/May/2015

**Make Your Wall Smart**

**Wall-Smart for Sentido - Product description:**

The Wall-Smart for Sentido is an adapter for in-wall flush installation of a Sentido keypad. The Wall-Smart for Sentido keypad securely mounts the keypad while allowing easy access, insertion and removal.

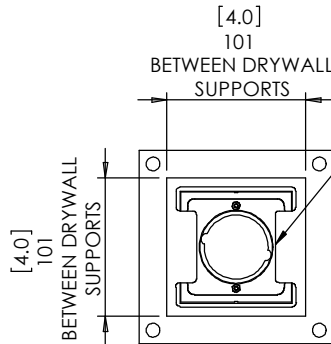
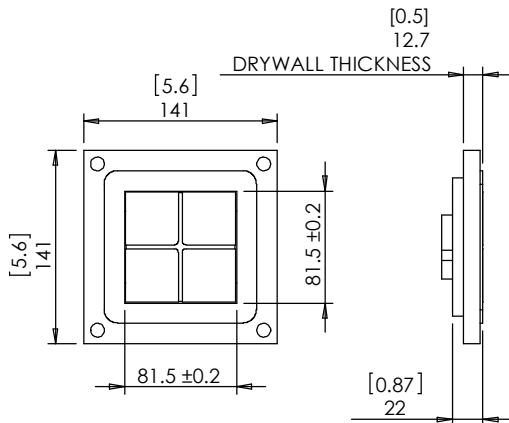
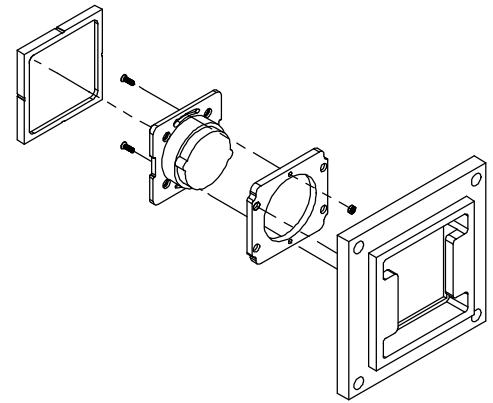
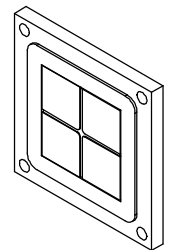
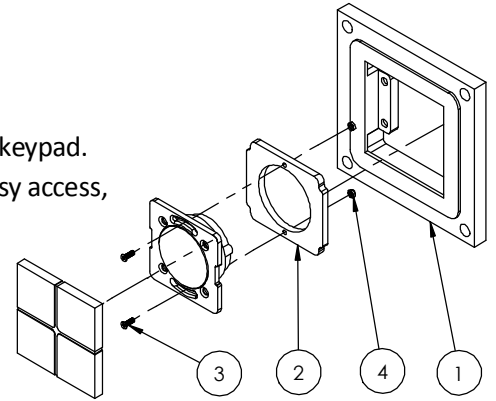
**Key features and benefits:**

- Flush with the wall.
- Paintable with the wall paint in any color and texture.
- Allows easy insertion and exertion of the keypad by manual push and magnet detachment of the keypad tray.
- The adapter is supplied unpainted (To be painted after installation as part of the wall).
- Designed to be installed in ½" drywall. Installation of the Wall-Smart adapter is straight-forward. Installation process is similar to drywall construction procedures. Before installation, read Wall-Smart installation instruction 10-04-00101-INS in <http://www.wall-smart.com/faq>
- For installation in concrete/block wall use "WS Concrete Box 142x142" P/N 10-01-112 (sold separately) according installation instruction 10-04-00103-INS in <http://www.wall-smart.com/faq>
- Designed for all Sentido keypads by Basalte © (keypad not included).
- Adapter kit contains:

1. Wall adapter;
2. Keypad adapter;
3. (2x) M3 screw;
4. (2x) M3 nut;

**Key properties:**

- Dimensions (W/H/D): 141mm (5.6")/ 141mm (5.6")/ 22mm (0.86")
- Power Supply: None (manual adapter).
- Weight: 0.19Kg, 0.42lbs.
- Material: Chemically treated, Moisture resistant MDF



NO IDENTIFICATION MARK FOR SENTIDO

PUSH TO OPEN

