



Model: WS SB FOR IPAD MINI 6

Model No.: 002-1-423

Family: WALL-SMART

DWG NO. 002-4-423-SPC

PRODUCT SPEC.

REVISION A

DATE 18/OCT/2021



### Make Your Wall Smart

#### “WS SB FOR IPAD MINI 6” - Product description:

The “WS SB FOR IPAD MINI 6” is an adapter for in-wall flush installation of IPAD MINI 6 in solid board walls.

The “WS SB FOR IPAD MINI 6” firmly mounts the iPad while allowing easy insertion, removal and operation.

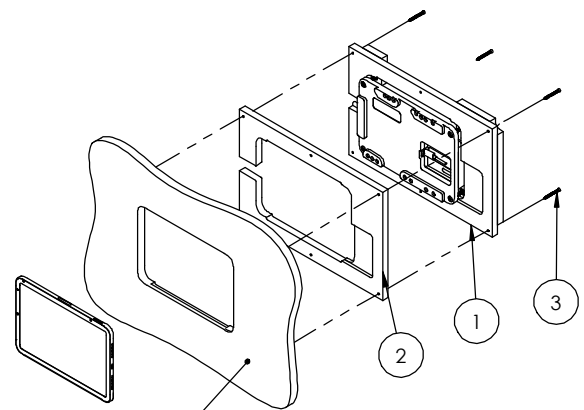
#### Key features and benefits:

- Flush with the solid surface wall.
- Wall mount may be mounted in any orientation.
- Allows easy insertion and removal of the iPad.
- Wall mount contains depth calibration screws and spacer allowing installation in a wide range of board thicknesses:  
With spacer: 2.1mm ~ 17.3mm [0.08” ~ 0.7”] thick.  
Without spacer 13.7mm ~ 29.4mm [0.54” ~ 1.15”] thick.
- See page 3 for routing dimensions.
- **NOTICE:** calibrate iPad depth 1.5mm beneath front surface.
- Designed for the use with iPad MINI 6 (by Apple) (iPad is not included).
- Adapter kit contains:
  1. (X1) Wall adapter
  2. (X1) routing template
  3. (X4) ST3x40 screws

#### Key properties:

- Dimensions: (W/H/D): 294.8mm (11.61”)/ 193.2mm (7.61”)/ 41.2/ (1.62”)
- Power Supply: Wall mount includes POE to USB converter. The installer should connect the wall mount to an IEEE 802.3at POE+ power source via CAT6 cable and RJ45 connector. (Please verify the power source can supply up to 25.5W)
- Weight: 0.9Kg, 1.98lbs.
- Material: Moisture resistant MDF (compliant with TSCA Title VI)

iPad® is a trademark of Apple Inc., registered in the U.S. and other countries.

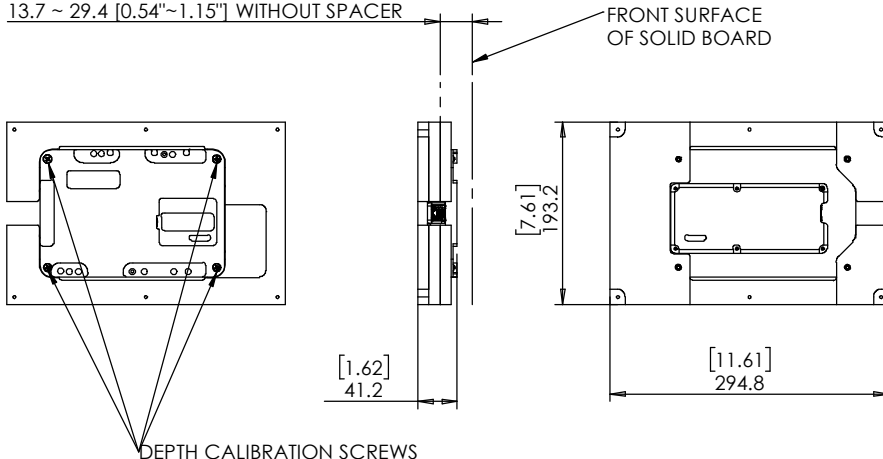


FRONT SURFACE OF SOLID BOARD

IN CASE OF INSTALLATION IN WOOD USE SCREWS, OTHERWISE APPLY STRUCTURAL ADHESIVE

FOR BOARDS THINNER THAN 17.3mm [0.7”] USE SPACER

SOLID BOARD THICKNESS RANGE:  
2.1 ~ 17.3 [0.08”~0.7”] WITH SPACER  
13.7 ~ 29.4 [0.54”~1.15”] WITHOUT SPACER



PUSH HERE TO REMOVE THE IPAD



Model: WS SB FOR IPAD MINI 6

Family: WALL-SMART

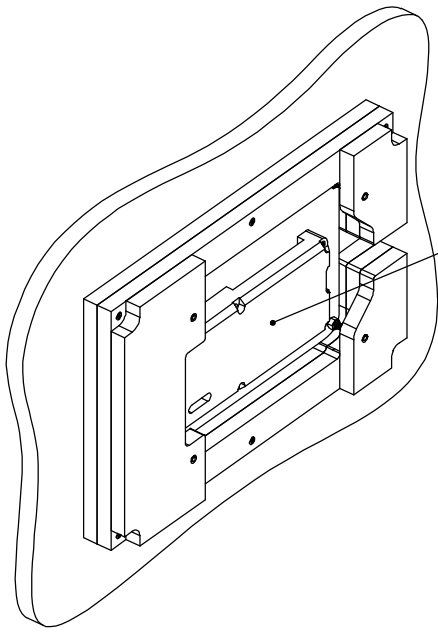
DWG NO. 002-4-423-SPC

Model No.: 002-1-423

PRODUCT SPEC.

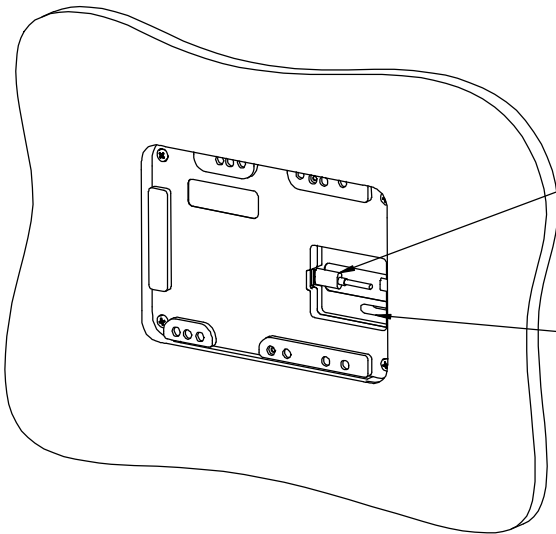
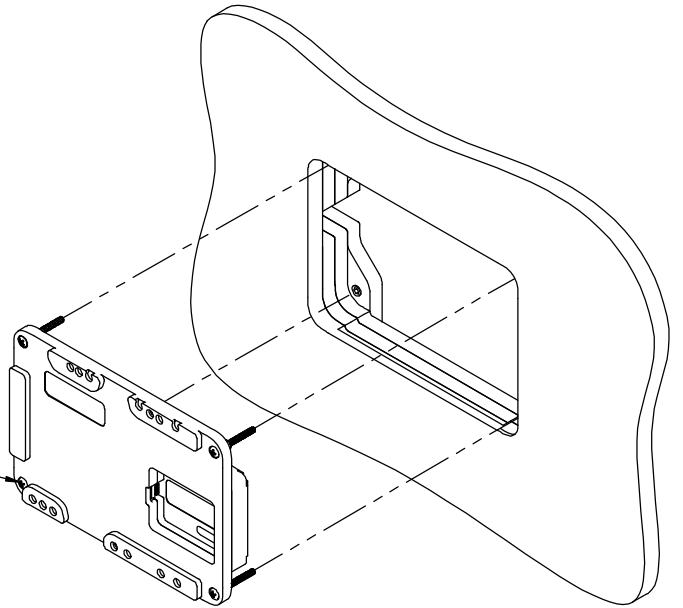
REVISION A

DATE 18/OCT/2021



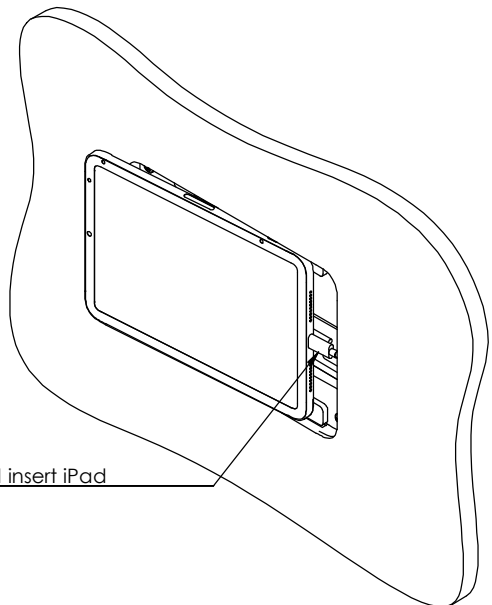
Before installation of the wall mount, connect a 48V IEEE 802.3at POE+ power source via a CAT5/6 cable and RJ45 connector to the POE to USB converter.

If required, it is possible to gradually unscrew the 4 depth calibration screws, remove the platform and connect the POE cable after the wall mount was installed.



Connect iPad USB-C cable to POE to USB converter

Organize the cable in the cable slit



Connect USB-C connector to the iPad and insert iPad

MARK 6 SCREW POSITIONS

