



Model: WS NC For Basalte Socket
1 Gang satin white

Family: WALL-SMART

DWG NO. 10-04-082-SPC



Model No.: 10-01-082

PRODUCT SPEC.

REVISION A

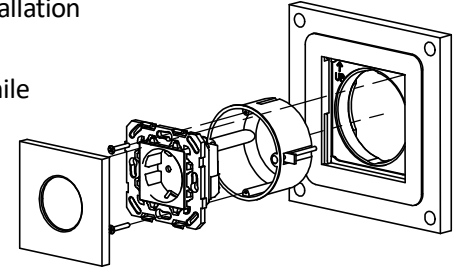
DATE 24/Oct./2017

Make Your Wall Smart

WS NC For Basalte Socket 1 Gang satin white - Product description:

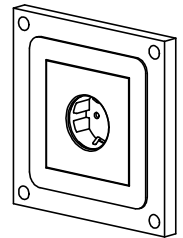
The "WS NC For Basalte Socket 1 Gang satin white" is an adapter for in-wall flush installation of a Basalte 1 gang satin white faceplate.

The "WS NC For Basalte Socket 1 Gang satin white" securely mounts the faceplate while allowing easy access, insertion and removal.

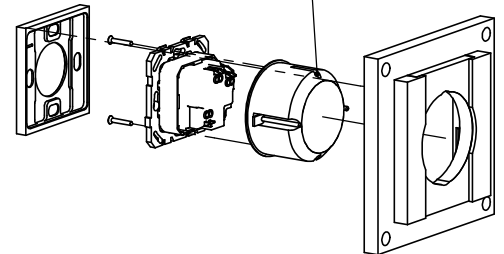


Key features and benefits:

- Flush with the wall.
- Paintable with the wall paint in any color and texture.
- Allows easy insertion and removal.
- The adapter is supplied unpainted (To be painted after installation as part of the wall).
- Designed to be installed in 1/2" drywall. Installation of the Wall-Smart adapter is straight-forward. Installation process is similar to drywall construction procedures. Before installation, read Wall-Smart installation instruction 10-04-00101-INS in <http://www.wall-smart.com/faq>
- For installation in concrete/block wall use "WS CONCRETE ADAPTOR 149x149" P/N 10-01-274 (sold separately) according installation instruction 10-04-00103-INS in <http://www.wall-smart.com/faq>
- Designed for Basalte 1gang satin white faceplate (faceplate, socket and back box are not included).
- Adapter kit contains X1 Wall adapter

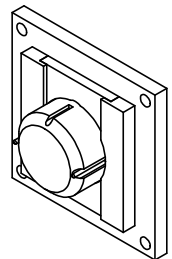


One-gang junction box
for hole Ø68mm
Dimensions to DIN 49073-1
(Not included)



Key properties:

- Dimensions (W/H/D): 147mm (5.8")/ 147mm (5.8")/ 25.3mm (0.996")
- Power Supply: None (manual adapter).
- Weight: 0.19Kg, 0.42lbs.
- Material: Chemically treated, Moisture resistant MDF



TO OPEN THE FACEPLATE
INSERT AND PUSH A THIN
PLASTIC CARD INTO THE VERTICAL
GAP ON THE BOTTOM RIGHT OR
ON THE TOP LEFT CORNERS

