



Model: WS RETROFIT FOR BLACK NOVA 1MODULE LOW V

Family: WALL-SMART

DWG NO. 084-4-929

Model No.: 084-1-929

PRODUCT SPEC.

REVISION A

DATE 08/DEC/2022



Make Your Wall Smart

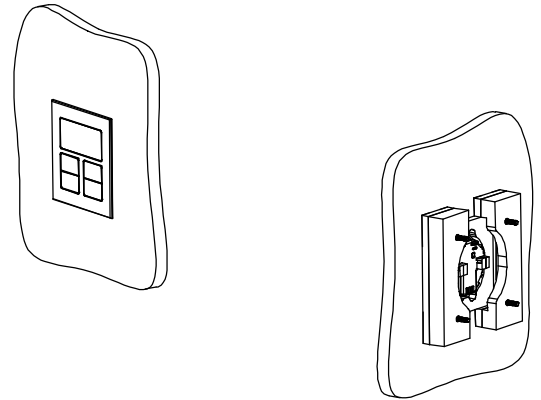
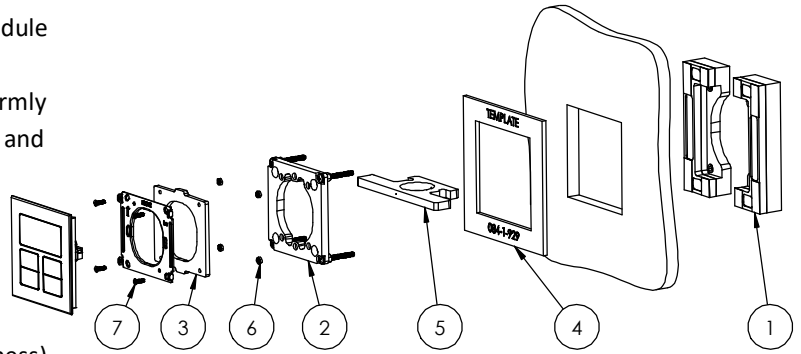
“WS RETROFIT FOR BLACK NOVA 1MODULE LOW V” - Product description:

The “WS RETROFIT FOR BLACK NOVA 1MODULE LOW V” is an adapter for in-wall nearly flush retrofit installation of 1 module low voltage Black Nova keypads.

The “WS RETROFIT FOR BLACK NOVA 1MODULE LOW V” firmly mounts the keypad while allowing easy insertion, removal and operation.

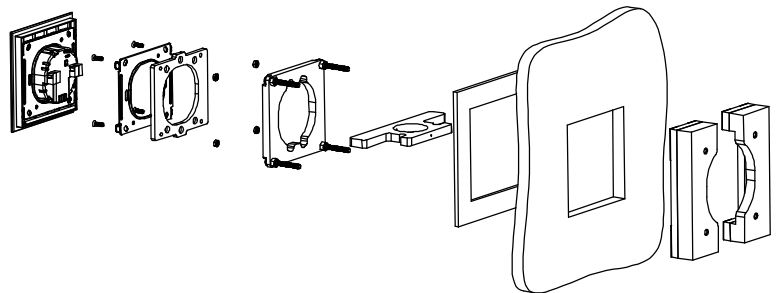
Key features and benefits:

- Nearly flush with the wall (3mm [0.12"] on-wall thickness).
- Allows easy insertion and removal of the keypad.
- Wall mount contains depth calibration mechanism.
- Designed to be installed in board thickness ranging from ½" up to 1".
- Designed for the use with low voltage Black Nova 1 module keypads (keypad is not included).
- Adapter kit contains:
 1. (X2) Wall mount base;
 2. (X1) Installation platform;
 3. (X1) Keypad adapter plate;
 4. (X1) Template;
 5. (X1) Adhesive curing retention plate;
 6. (X4) M3 nuts;
 7. (X4) M3x12 flush head screws;
- Structural adhesive is not included in the wall mount kit.

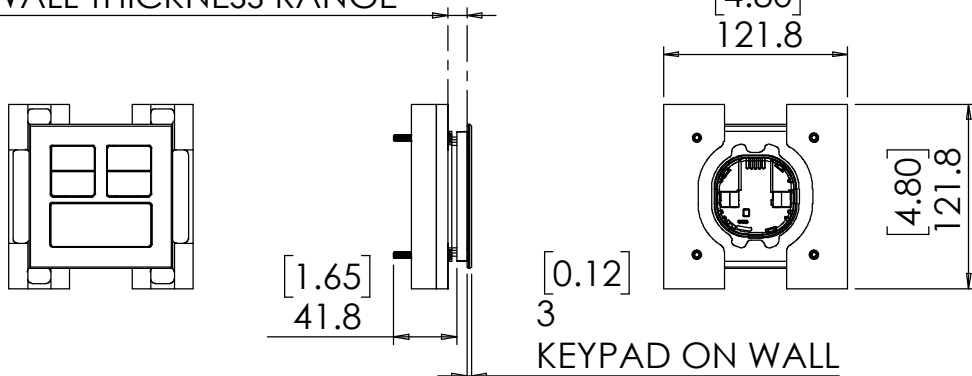


Key properties:

- Dimensions: (W/H/D): 121.8mm (4.8")/ 121.8mm (4.8")/ 41.8mm (1.65")
- Weight: 0.1Kg, 0.22lbs.
- Material: Moisture resistant MDF



[0.5" ~ 1"]
12.7 ~ 25.4
WALL THICKNESS RANGE





Model: WS RETROFIT FOR BLACK NOVA
1MODULE LOW V

Family: WALL-SMART

DWG NO. 084-4-929

Model No.: 084-1-929

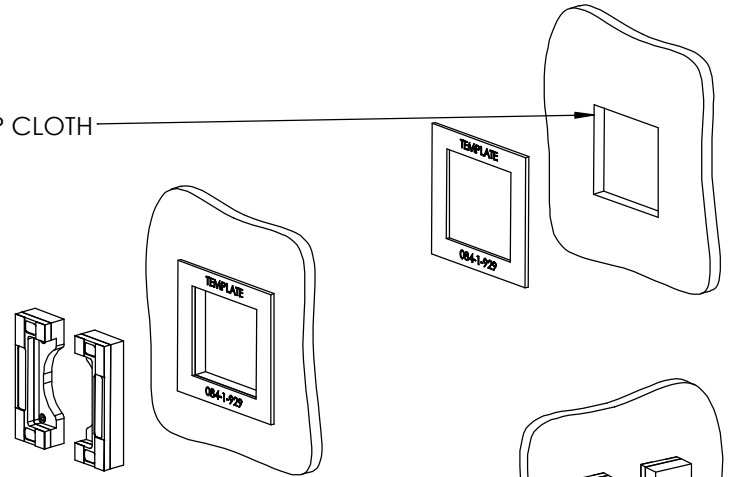
PRODUCT SPEC.

REVISION A

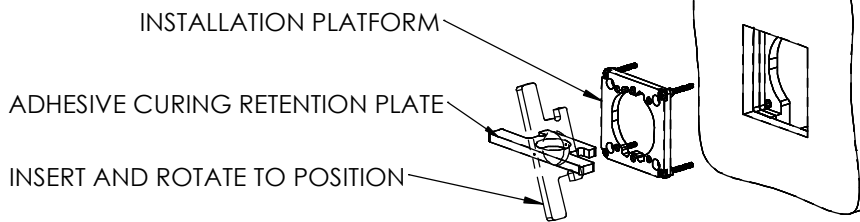
DATE 08/DEC/2022



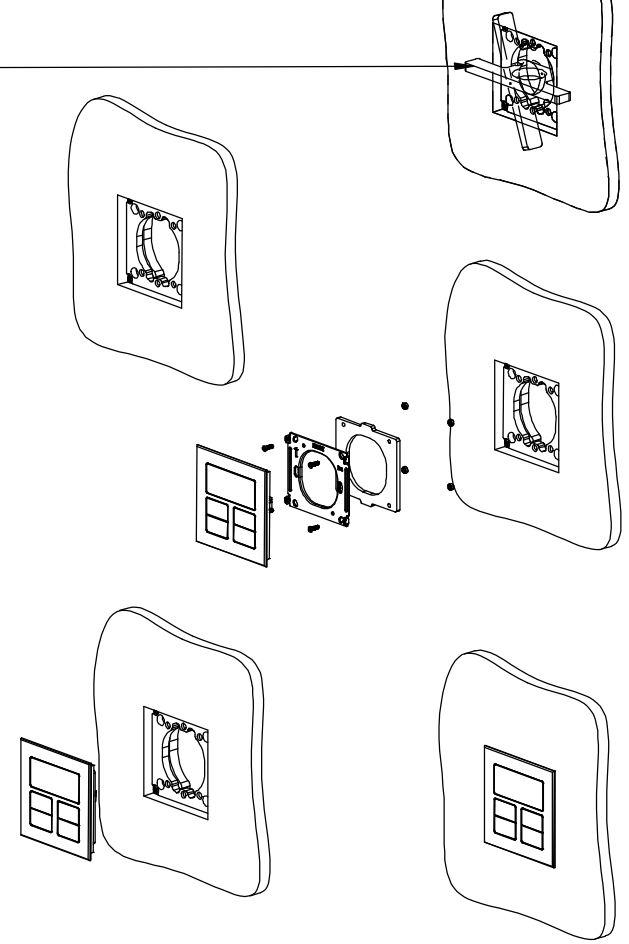
1. CUT OPENING ACCORDING THE TEMPLATE
2. ROUTE NECESSARY CABLES
3. CLEAN THE INNER SIDE OF THE BOARD WITH A DAMP CLOTH



4. INSERT AND ATTACH TO THE BACK OF THE BOARD 2 BASE UNITS
APPLY STRUCTURAL ADHESIVE (MS POLYMER)
(ADHESIVE IS NOT PART OF THE KIT)



5. SCREW IN THE INSTALLATION PLATFORM.
6. INSERT THE ADHESIVE CURING RETENTION PLATE.
7. LIGHTLY TIGHTEN THE PLATFORM SCREWS.
8. LET THE ADHESIVE CURE ACCORDING THE ADHESIVE
MANUFACTURER INSTRUCTION.



9. UNSCREW THE PLATROFORM FEW SCREW TURNS TO RELEASE
THE RETENTION PLATE AND REMOVE THE RETENTION PLATE.
10. ADJUST THE DEPTH OF THE PLATFORM.
11. ATTACH THE KEYPAD ADAPTER PLATE TO THE KAYPAD .
12. CLICK IN THE KEYPAD.



Model: WS RETROFIT FOR BLACK NOVA
1MODULE LOW V

Family: WALL-SMART

DWG NO. 084-4-929

Model No.: 084-1-929

PRODUCT SPEC.

REVISION A

DATE 08/DEC/2022



CUTTING TEMPLATE:

